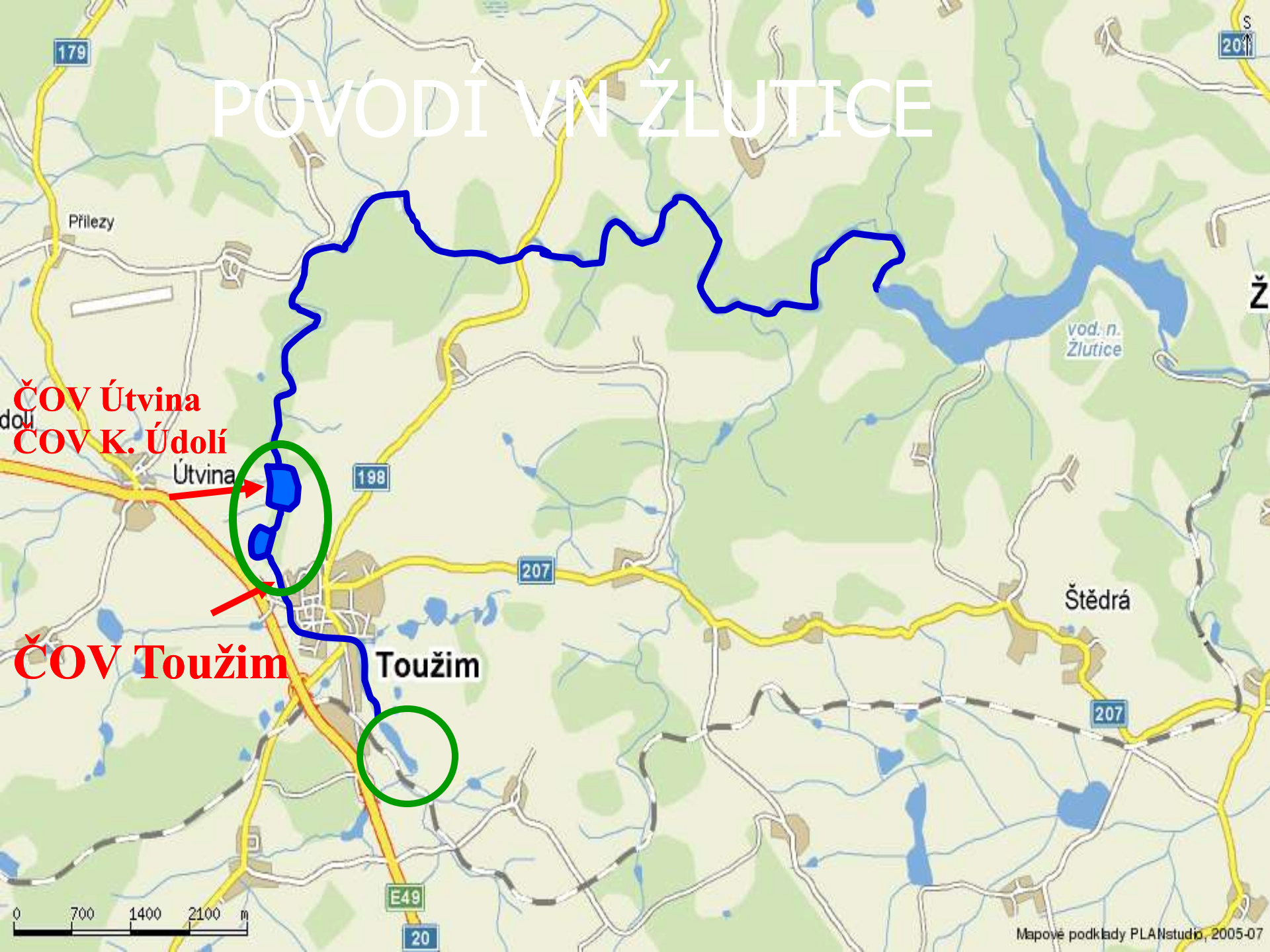


An aerial photograph of a rural landscape. In the center, a dark pond is surrounded by a dense forest of green trees. The forest extends to the edges of the frame. In the upper right corner, there are agricultural fields with distinct patterns of brown, green, and yellow, suggesting different crops or stages of harvest. The overall scene is captured from a high angle, looking down on the terrain.

RYBNÍKY V POVODÍ VN ŽLUTICE

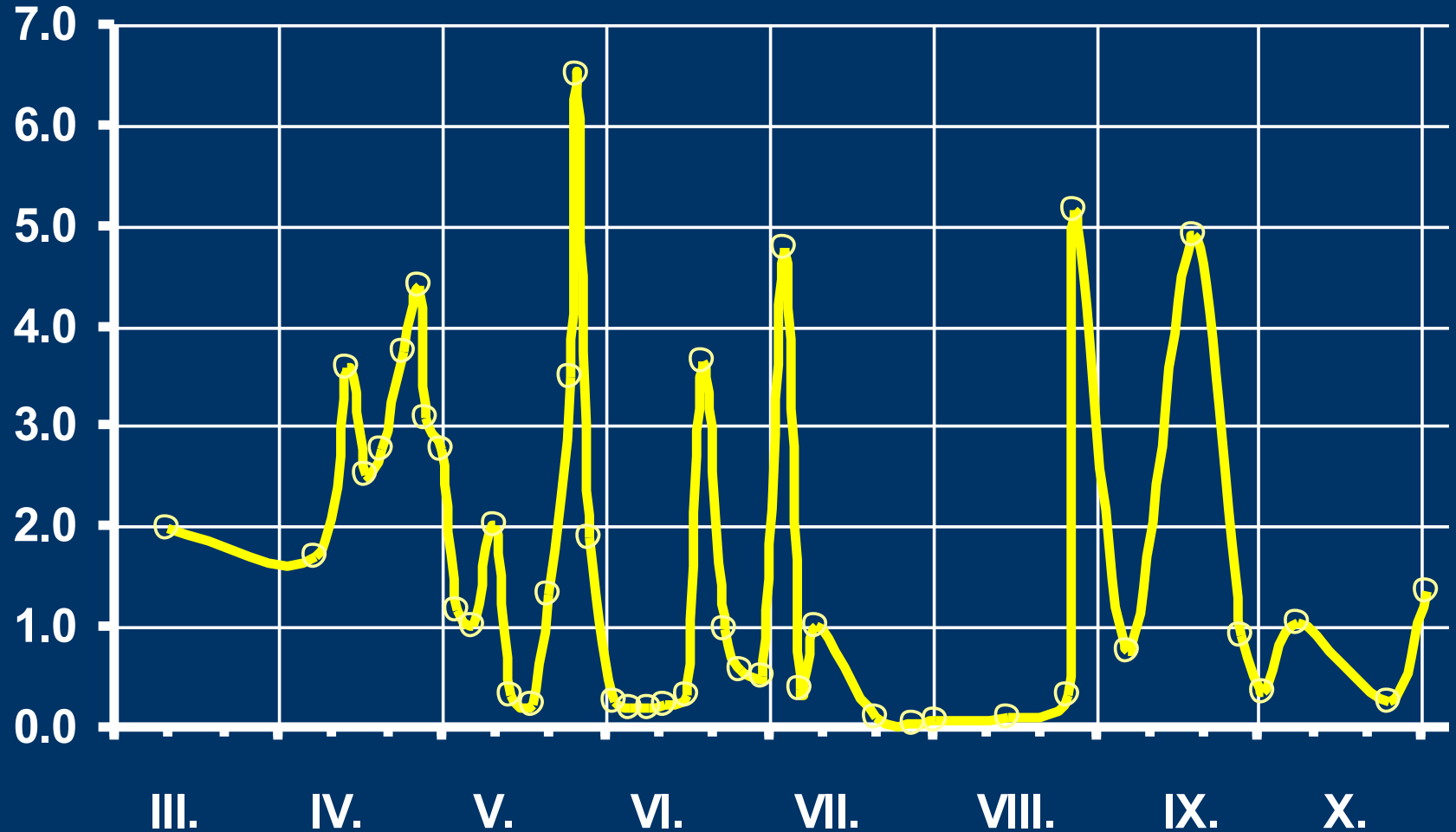
Jindřich DURAS

POVODÍ VN ŽLUTICE



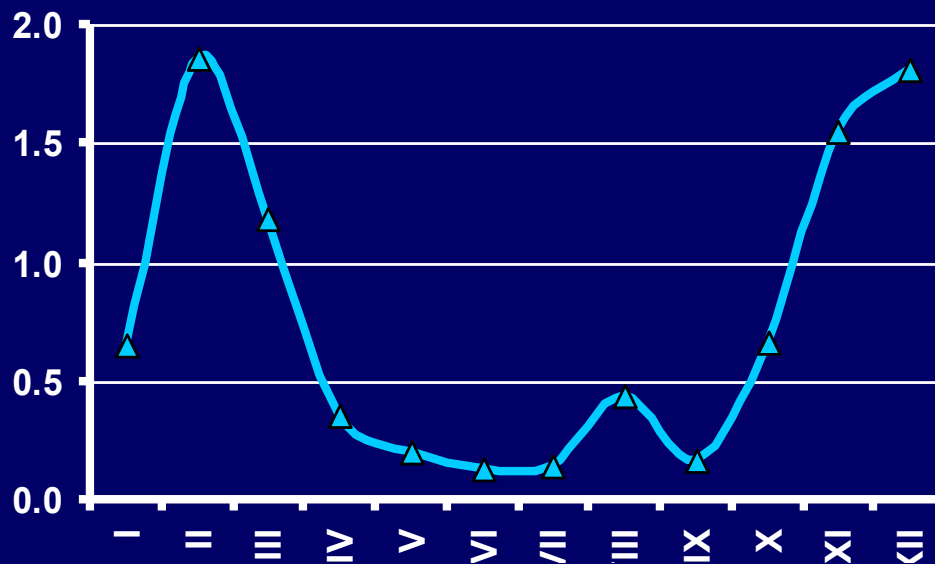
VN ŽLUTICE

P celkový - přísun do VN Žlutice ($\text{kg} \cdot \text{den}^{-1}$)

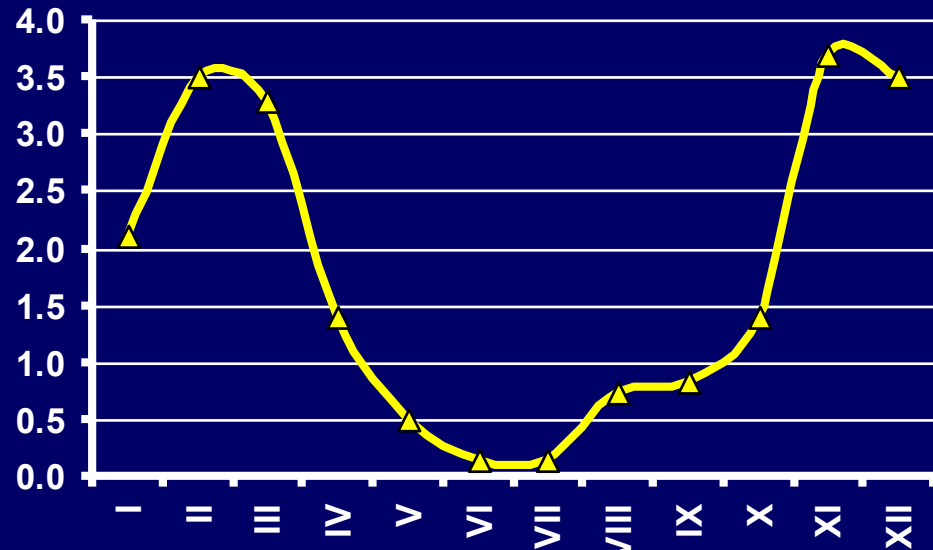


SEZÓNÍ PRŮBĚH

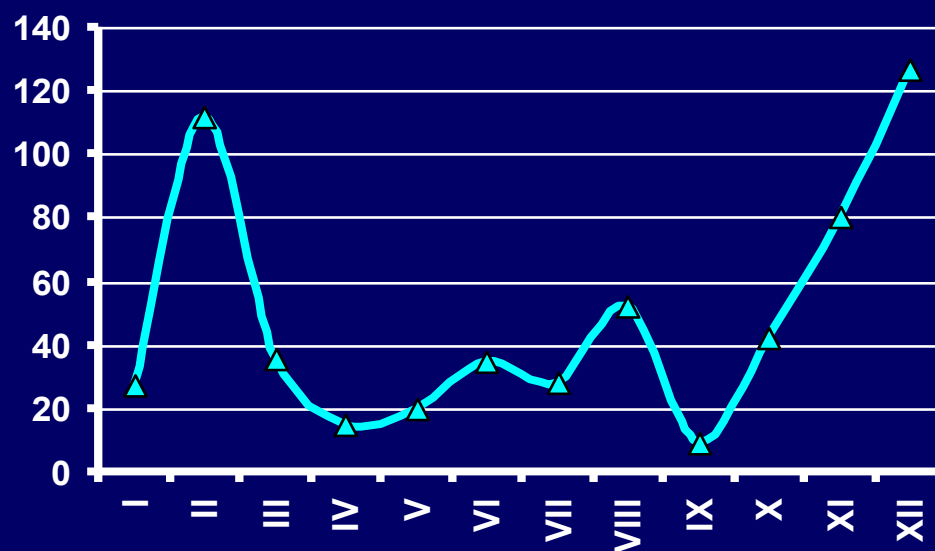
Průtok (mil. m³)



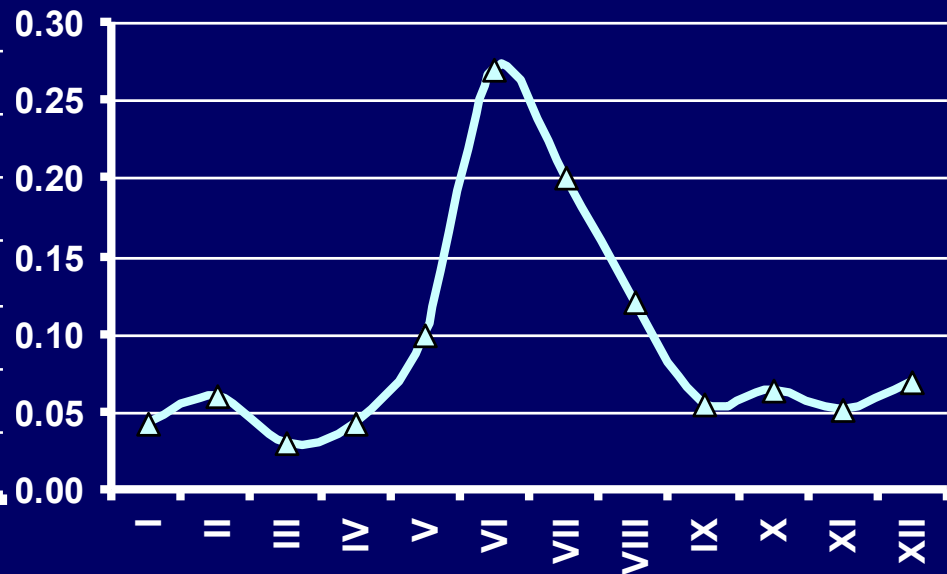
NO₃-N (mg.l⁻¹)



Odtok (kg)



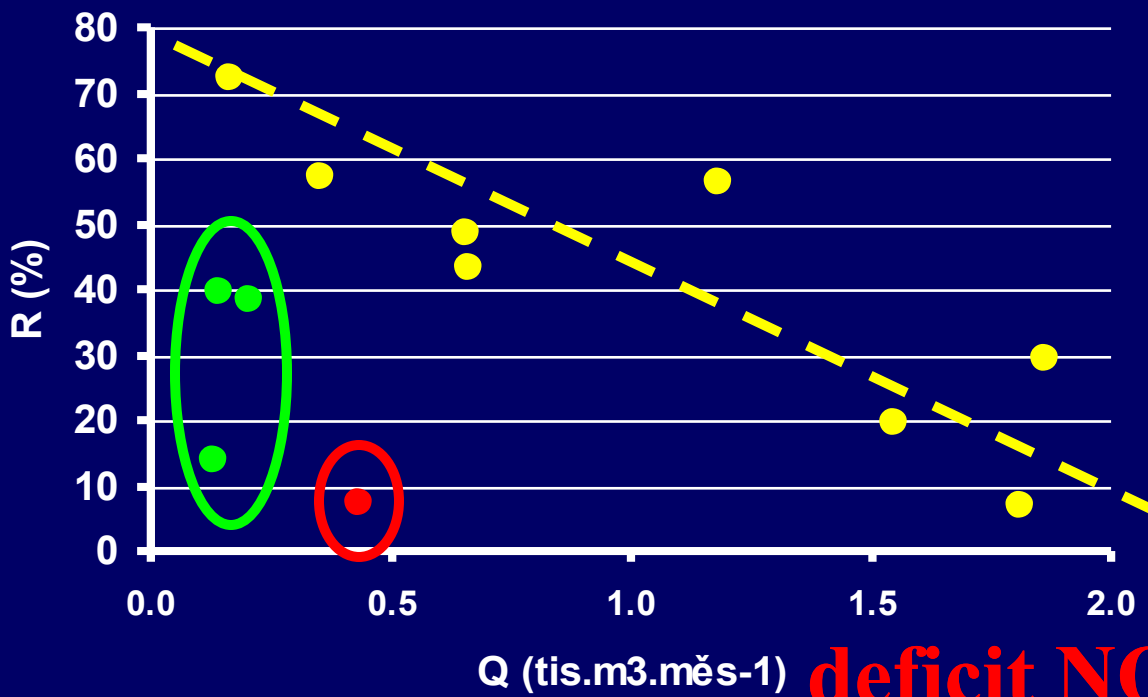
P celk (mg.l⁻¹)



RETENCE FOSFORU

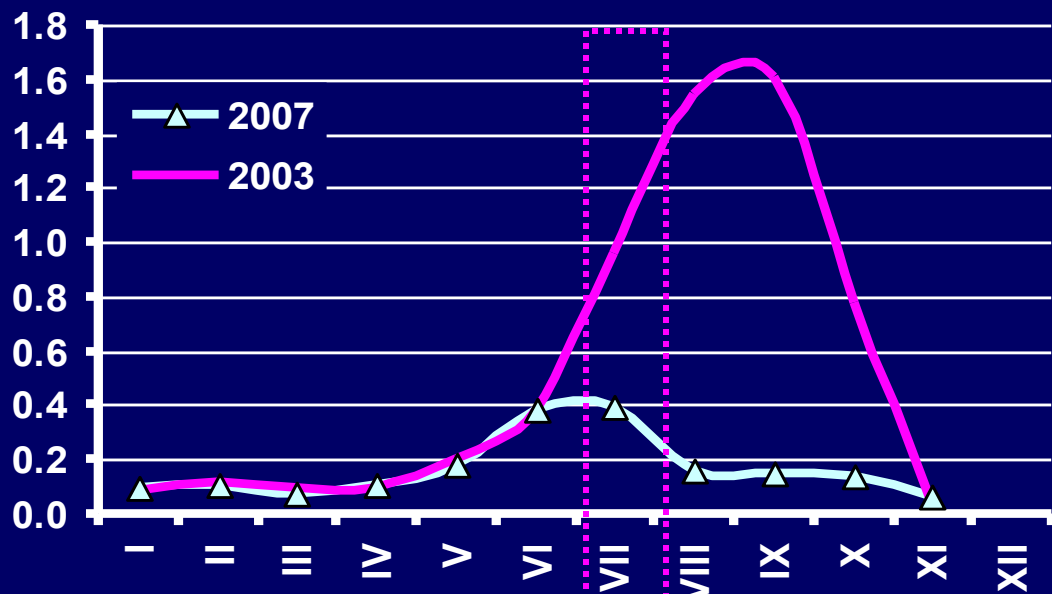


deficit NO_3^- $Q \times \text{retence}$

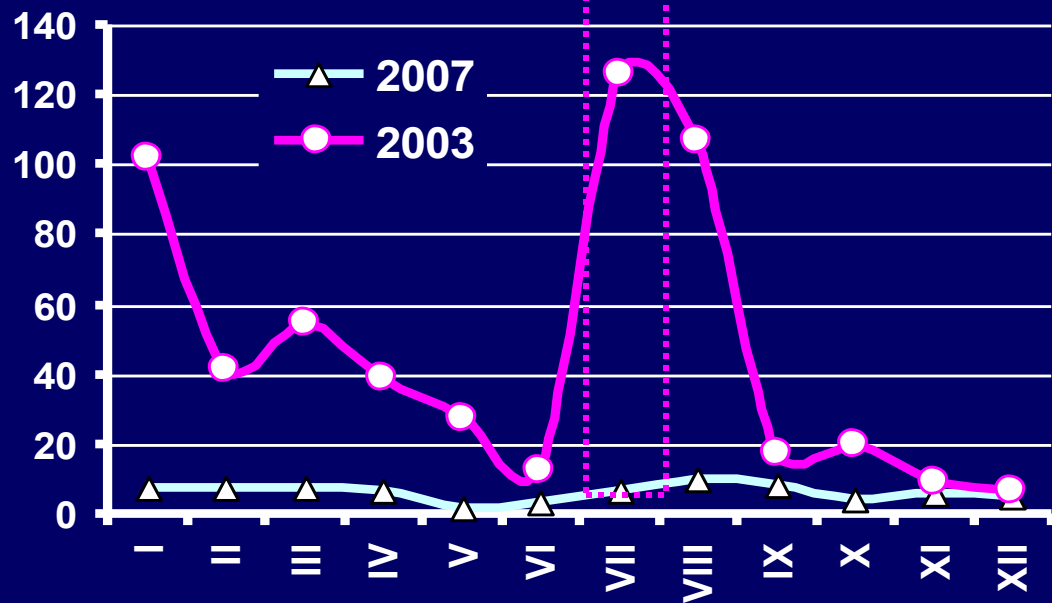


deficit NO_3^- + zvýšený Q

P celk (mg.l⁻¹) Podzámecký odtok



P celk (kg.měs⁻¹) ČOV Toužim



VÝZNAM PRO VN ŽLUTICE

Oba rybníky úhrnem cca 120 000 m³

FOSFOR		% přísunu (IV.-IX.)
mg.l ⁻¹	kg	
1	120	20 až 100
0.4	48	10 až 40
0.1	12	2 až 10

ZÁVĚRY

Význam rybníků v povodích nádrží:

pozitivní retence fosforu

negativní zásoba P rychle dopravitelná do nádrže

ČOV zaústěné do rybníků:

neodstraňovat nitráty

odstraňovat fosfor

fosforovému režimu přizpůsobit i využívání rybníka

An aerial photograph showing a central pond surrounded by a dense cluster of trees. The pond is irregularly shaped and reflects the sky. The surrounding area is a mix of green grassy fields and wooded areas. A dirt road or path is visible on the right side, winding through the trees. The overall scene is a rural landscape.

děkuji za pozornost